



# THE PUEBLO CLASSIC



**April 24th and 25th, 2021**

Presented by the **City of Pueblo** and the  
**Rocky Mountain Collegiate Cycling Conference**

**Saturday April 24th - Team Time Trial and *Steel City Road Race*** This is an out-and-back course held on the access road to the US DOT rail test tract just outside Pueblo. With smooth pavement, wide sweeping turns and few gentle hills, it features a turn-around at the 17 mile mark. Categories will race 34, 48, or 68 miles. The 48 mile races will include a mid-course turn-around at the 7 mile mark followed by 2 more 17 mile segments. 34 and 68 mile races will race 2 or 4 segments of the 17 mile leg. TTT is 3 or 4 person and is 7 miles out and 7 miles back. See enclosed road map.

**Sunday April 25th—*Pueblo Chilly Criterium*** This is a classic and fast downtown course with 2 normal right-hand corners and an apex corner on the north end. At 0.7 miles in length, it features smooth pavement and a tree-lined finish. The Start-Finish is at Union and 'D' Street with a long run-out. See enclosed Criterium map.

**SEE COVID-19 REQUIREMENTS ON PAGE 2**

**Held Under USAC Permit # 2021– 3202**

**Chief Referee:** Shawn Farrell

### All USAC Rules Apply

- DUE TO COVID-19 restrictions, **THERE WILL BE NO RACE DAY REGISTRATION!!!!**
- USAC Release waiver must be signed by all racers or parent/legal guardian for anyone 18yrs or younger.
- USAC or Collegiate licenses are required . Annual licenses available online at [www.usacycling.org](http://www.usacycling.org)
- USAC 1-Day *Beginner* license: \$10, only for Cat 5 men/women. Can be purchased online at <https://www.usacycling.org/events?state=CO> , find & click on event , Get One-Day. Bring receipt to race.
- USAC 1-Day *Experienced* license: \$25, only available to former USAC members- category 1,2,3,4 men/women, and must be purchased online at same link as indicated for *Beginner* license.
- **BRAC Annual membership recommended** to avoid BRAC 1-Day membership (\$5) on race day.
- BRAC annual membership available at: [www.coloradocycling.org](http://www.coloradocycling.org)

**Information:** <http://collegiatecycling.org/rmccc/rmccc-pueblo-classic/> email: [castagneri@gmail.com](mailto:castagneri@gmail.com)

Registration Online at: <http://www.bikereg.com/> **Online registration closes April 22nd at 8pm MDT**

**TTT registration fee is for an entire team. Collegiate TTT is \$25. Criterium or road race registration for collegiate licensed riders is \$25.**

Registration fees shown are for each race. If you race twice on **one day**, the additional races are: \$10

**!!!DUE TO COVID-19 CONCERNS THERE WILL BE NO RACE DAY REGISTRATION!!!**

Races held rain or shine. We have a **no refund policy**.

Number pickup will open at **7:00 am** and close 40 minutes before the start of each category, Entry fee includes USAC Surcharges.

Due to COVID-19 spacing during staging, all road races will have a 1K neutral start. All criterium races will have a 1-lap neutral start.

## **USAC/BRAC and Pueblo County Health COVID-19 Race Procedures**

In order to be granted a race permit amid uncertain conditions of the COVID-19 pandemic, the race promoter has gone to great lengths to make road racing is safe as possible. It has been necessary to modify physical spacing for all facets of road events including check-in, parking, restrooms, warm-up and race staging. The Promoter and the Pueblo County Health Department require **ALL staff and participants** to:

- **Wear a mask at ALL times** (except while racing). This includes anytime outside your vehicle on race location such as bike setup, warming up, visiting the porta toilets, and staging before your race.
- **Maintain 6 feet of spacing** between everyone except your immediate family.
- Do not congregate with your teammates or fiends before or after races.
- Bring your own food and plenty of water, the race sponsor will not provide food or water.
- Submit to a simple no-touch health screening during check in
- Be prepared for extra spacing during staging. All Road Races will have a 1K neutral start. All Criterium races will have a 1-lap neutral start.
- Do not provide food or water hand-ups for non-team members at the road race feed zone.





Saturday April 24 - Steel City Road Race						
Category	Start Time	Miles	Segments	Awards	Entry Fee	Field Limit
Team Time Trial (2 min intervals) *	8:00 AM	14	2x7	Medals	\$35 *	60 teams
Intro to Road Racing	10:45 AM	7	1x7		Free	45
SM 3, Collegiate Men B	11:00 AM	48	(2x7)+(2x17)	Medals	\$35 **	75
MM 40+ 3	11:05 AM	48	(2x7)+(2x17)	Medals	\$35	75
SW Pro 1-2, Collegiate Women A	11:10 AM	48	(2x7)+(2x17)	\$500/300/200	\$35 **	75
MM 40+ 4	11:15 AM	48	(2x7)+(2x17)	Medals	\$35	75
<b>BREAK</b>						
SW 3, Collegiate Women B	1:30 PM	34	2x17	Medals	\$35 **	75
SM 4, Collegiate Men C	1:40 AM	34	2x17	Medals	\$35 **	75
SM 5, MM 5	1:50 PM	34	2x17	Medals	\$25	75
SW 4, SW 5	2:00 PM	34	2x17	Medals	\$25	75
<b>PAUSE</b>						
SM Pro 1-2, Collegiate Men A	2:15 PM	68	4x17	\$500/300/200	\$35	75
MM 40+ 1-2-3	2:30 PM	68	4x17	Medals	\$35	75
Sunday April 25 - Pueblo Chilly Criterium						
Category	Start Time	Minutes	Awards	Entry Fee	Field Limit	
SM 5	8:00 AM	30	Medals	\$25	50	
SW 3, Collegiate Women B	8:40 AM	40	Medals	\$35 **	75	
SM 4, Collegiate Men C	9:20 AM	40	Medals	\$35 **	75	
SM 3, Collegiate Men B	10:10 AM	50	Medals	\$35 **	75	
SW Pro 1-2, Collegiate Women A	11:10 AM	60	\$500/300/200	\$35 **	75	
Intro to Criterium Racing	12:15 PM	15		Free	30	
City of Pueblo Event	12:30 PM	20				
SM Pro 1-2, Collegiate Men A	1:00 PM	60	\$500/300/200	\$35 **	75	
SW 4, SW 5	2:10 PM	30	Medals	\$25	50	
MM 40+ 4	2:50 PM	40	Medals	\$35	75	
MM 40+3	3:40 PM	50	Medals	\$35	75	
MM 40+ 1-2-3	4:40 PM	50	Medals	\$35	75	

**The Team Time Trial is open to USAC only or Collegiate only teams of 4.** Simply put, there will be no mixed USAC/collegiate TT teams. **Start interval is 2 minutes.** Collegiate-only teams will be given first start priority. Given a limited number of start times (60), we will host the following categories with **12 slots each**:

- SW Pro 1-2-3, Collegiate Women A
- SW Cat 4 & 5, Collegiate Women B
- SM Pro 1-2-3, Collegiate Men A
- SM Cat 3, Collegiate Men B
- SM Cat 4-5, Collegiate Men C

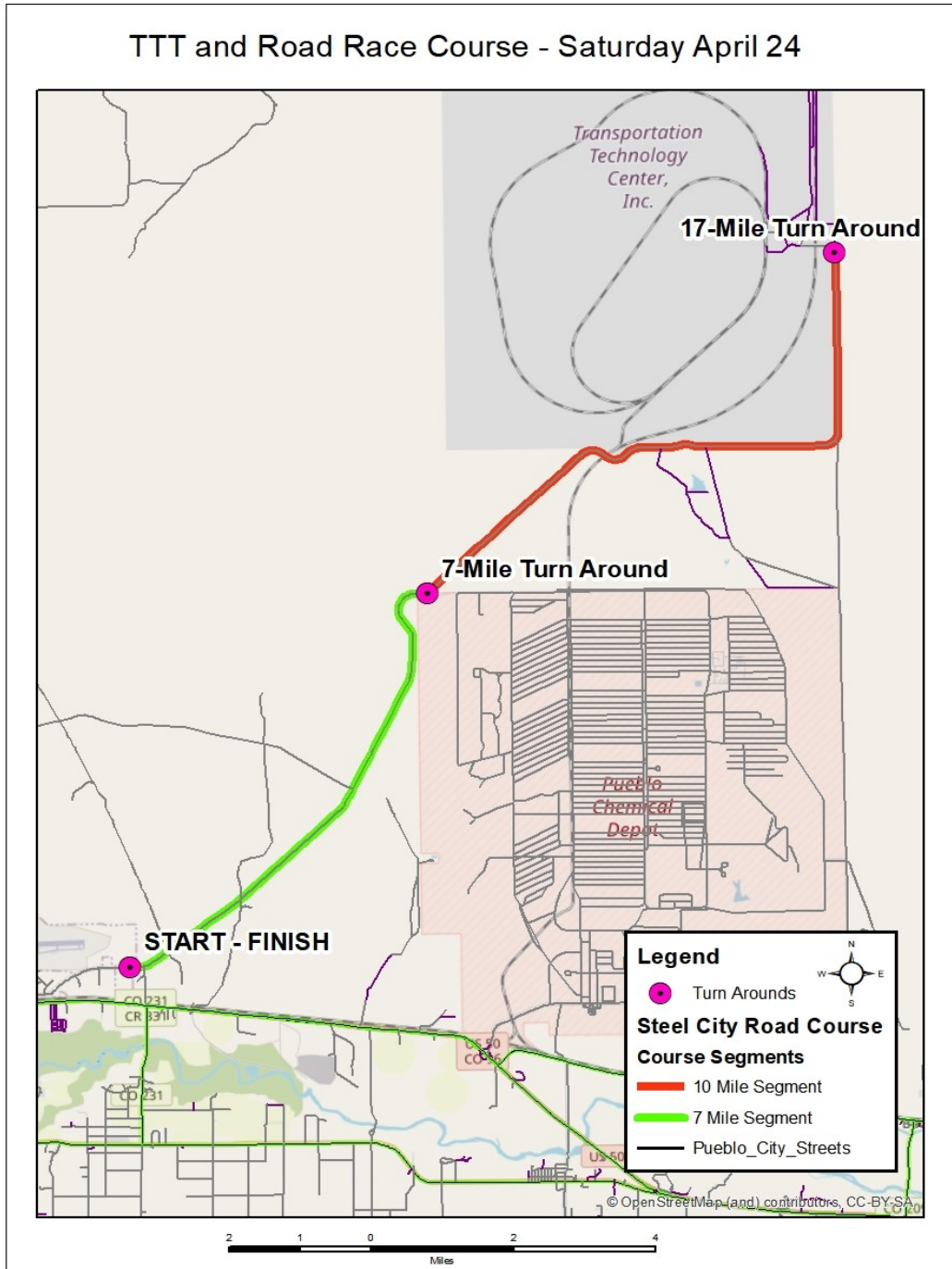
**\* TTT registration fee is for an entire team.**

**\*\* Collegiate TTT is \$25 per team. Criterium or road race registration for collegiate licensed riders is \$25 per event.**

# THE PUEBLO CLASSIC

## Team Time Trial and Steel City Road Race

**Directions:** Follow I-25 to Pueblo then take US 50 East. Travel 5.75 miles east to Paul Harvey Blvd. Turn left and travel north to West United Ave/ Pueblo Airport. Drive 1 mile east and park on the south side of United Avenue in the designated lot. Look for the signs. The start line is another 1/2 mile east on United Avenue. Feed zone for **68 mile race only** will be an uphill segment on green return segment approximately 2 miles from the start/finish line.



# THE PUEBLo CLASSIC

## Pueblo "Chilly" Critierium

**Directions:** Take I-25 into Pueblo and take **exit 98B**, City Center Drive. Travel west on City Center Drive to North Main Street and turn south. Travel south on Main Street to the **Main Street parking garage** adjacent to the Pueblo Riverwalk. Parking is **free** on Sundays. The start finish will be just west on D Street at Union Avenue. Staging is on D street between Main St. and Union Avenue.

